

NEWLAND GALLERY

Summer Exhibition 2015

Thursday 4th June to Sunday 7th June

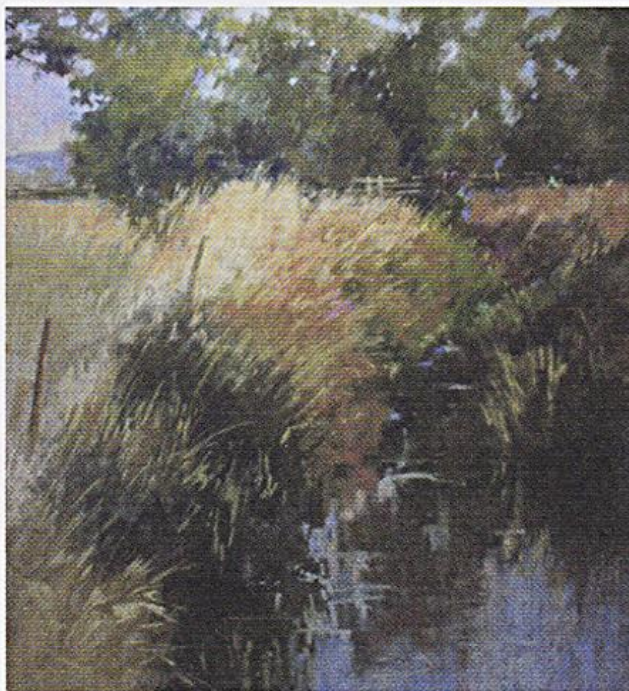
Pastels by Richard Turner

Willow Sculpture by Victoria Westaway

Ceramics by Plaxy Arthur

Etchings by Miranda Halsby

Oil Paintings by Julian Halsby

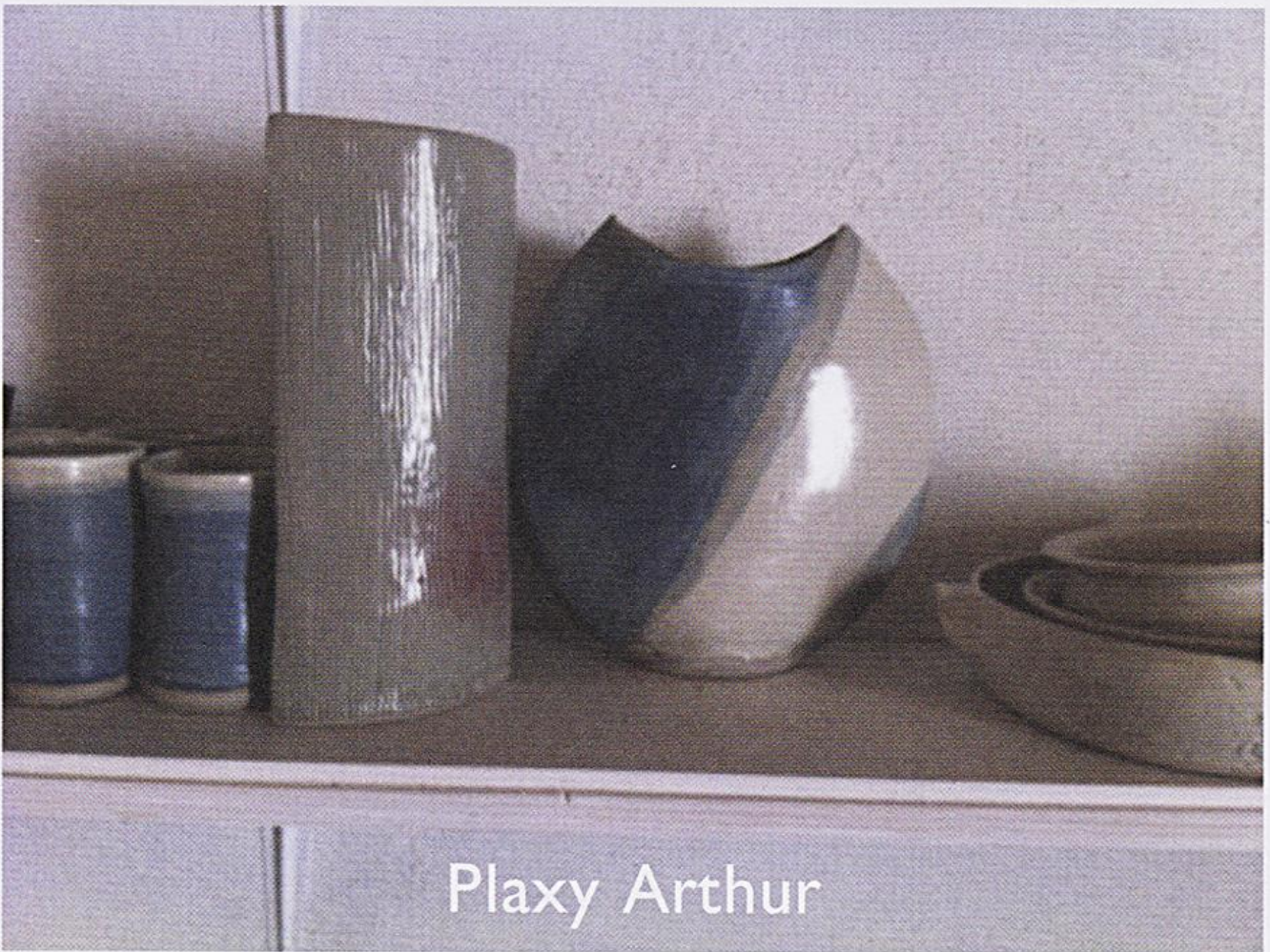


'Reeds and Rhyme' Pastel by Richard Turner

You and your Friends
are cordially invited to the Private View on
Thursday 4th June from 5.30 to 8pm

The Gallery is open each day from 10am to 5pm

Newland Gallery, 101 Newland, Sherborne, Dorset DT9 3DU
01935 812177 www.newlandgallery.co.uk



Plaxy has always had a passion for ceramics, making pots alongside her professional career. While she lived, worked and travelled around the world she was always inspired by pots, especially in India and Africa. She was an amateur potter at this time, but on retirement five years ago, she took it up in earnest. She now works from her home in Dorset, where she has her studio. She uses stoneware clay in reduction firings, and also smoke fires some of her work. She makes domestic ware, but also hand-builds larger one-off pieces. She sells her work in London, Dorset and Somerset.

Richard Turner

Richard was the winner of the Ann Longley Award in 2014 and 2015 at The Pastel Society Open Exhibition at The Mall Galleries, London. His work, which is often based on the landscapes around his home in Somerset, celebrates medium of Pastel both in its pure dry form and as a finish to images under-painted with other liquid mediums.



Victoria Westaway

Willow and Wire Sculptor Victoria Westaway comes from South Somerset. It was as a Theatre Designer, that Victoria started to use willow to produce giant puppets, lanterns and fantastical costumes. Using these skills she went on to train and teach in Fine Art and Interior Design within a variety of settings, before an epic World trip took her to South America, South East Asia and Oceania. During this time Victoria was inspired by the crafts of small rural communities, who created both beautiful and functional pieces from the rich source of natural local materials.

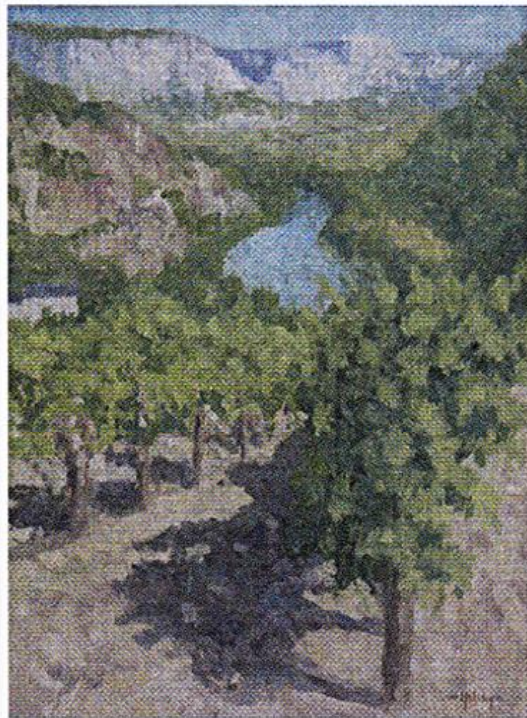
Now Victoria creates bespoke willow and wire garden sculptures in the barn next to her Herefordshire cottage on the hill, her sculptures offer a perennial beauty which reflect the ebb and flow of the horticultural year.



Japanese Maple

Miranda Halsby RBA

Miranda Halsby was elected a member of the Royal Society of British Artists in 2001 and now has two fully equipped print studios, one in Dorset and the other in the Languedoc where she spends each summer. She has work in private collections in England, France, the USA and Japan and has had two one-man shows at Abbott and Holder in London.



Vineyards above the Tarn Valley

Julian Halsby RBA

Julian Halsby studied painting in Florence before taking a degree in the History of Art at Cambridge. He is a painter, lecturer and art critic and elected member of the Royal Society of British Artists, the International Association of Art Critics and the Critics Circle.